





Welcome to COFFEE TIME, a mobile phone app concept intended to provide users coffee shop overviews and details in their area.

A photograph of two women sitting at a table in a coffee shop. The woman in the foreground has long blonde hair and is smiling while holding a white coffee cup. The woman behind her is also smiling and laughing. The background is softly blurred, showing warm interior lights.

COFFEE TIME aims to enlighten users on what to expect from an experience at any of their local coffee shops by presenting useful information such as menu, pricing, location, and overview.

A close-up photograph of a person's hands holding a dark blue ceramic coffee cup. The cup is filled with a latte, featuring a white foam top with a heart-shaped latte art design. The person is wearing a blue and white plaid shirt.

The app is geared to save consumers the time of potentially having a less than desired experience by providing this information, and guiding them to the perfect spot for enjoying a cup of coffee.



Meet Allie

She is a busy professional who has just acquired a new role with her company. The new position requires her to migrate from her hometown near Toronto into the Austin area.



One of the biggest highlights of her day is enjoying a soothing cup of Gevalia Caramel Machiatto.

This habit has become more of a necessity for her, from which she cannot envision herself deprived.



With just a week's notice and unfamiliar with the area, Allie has little time to settle in her new surroundings, occupied with her migration.



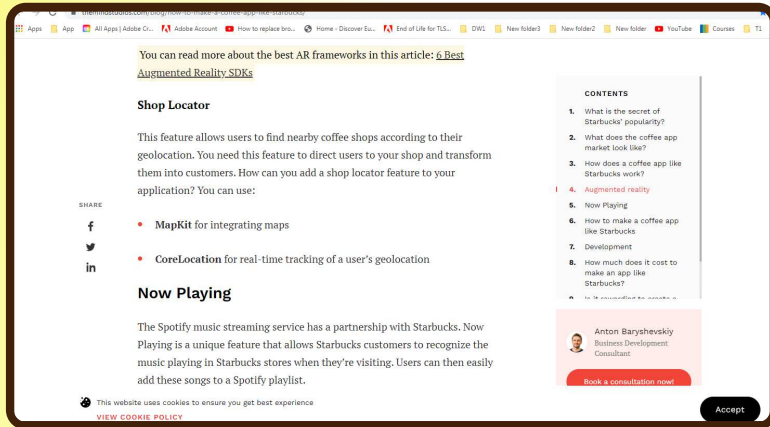
Her busy schedule allows roughly half an hour for lunch, just enough time for a cup of recharge. She Googles coffee shops in the area, but is oblivious of what precisely to expect.



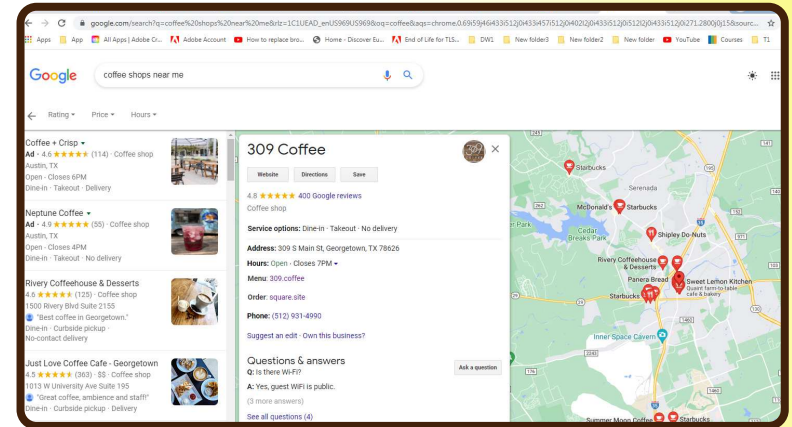
After a few bad experiences, she grows increasingly frustrated, not knowing where to go to find something similar to her preference. Plus, she is vegan, and needs to find a place that offers dairy substitute. She is weary of lending herself to costly chances of dissatisfaction.



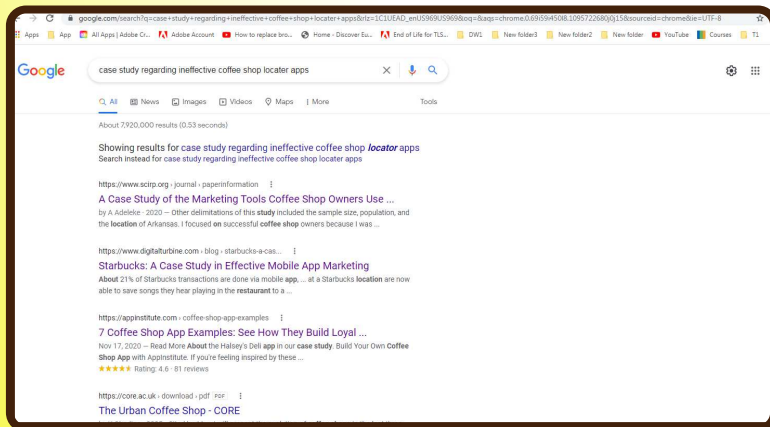
When one searches for a coffee shop locator, they might assume that many are available on the ready, when in fact this could be a challenge.



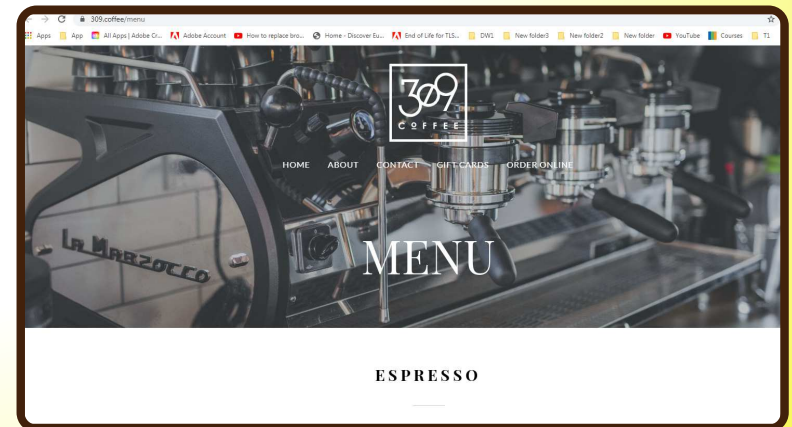
One may also assume to just navigate to the shop's listed website that populates on Google Maps. Not only do some shops not have a website, but some websites can become rather intricate, and confusing to navigate.



One might assume to google for coffee shops in the area, but does this really help a user pinpoint the right shop for their specific needs and satisfaction?



Rather than spend time surfing through a shops potentially elaborate site, COFFEE TIME makes effort to dumb down information on a shop's website by consolidating key info in fewer steps through simple navigation.




Contrary to potential assumption, Google does not necessarily provide a user with the most precise at glance experience. The user can still be left with the chance of trying out a shop and taking the risk of becoming disappointed with the experience.

The app aims to present informative coffee shop details in regards to location, menus, overview, and pricing. This one stop resource can perhaps bury the extensive rabbit hole some users may endure surfing for a good coffee shop in their area, and perhaps enlighten a user to better alternatives to their current choice.


Coffee TIME Georgetown, TX 78628

Search | 🔍


Starbucks
 4410 Williams Dr
 (512) 868-0284
 Dine-in
 Curbside pickup
 Delivery



Shipleigh Do-Nuts
 3308 Williams Dr #100
 (512) 819-0770
 Dine-in
 Drive-through
 Delivery



309 Coffee
 309 S Main St.
 (512) 931-4990
 Dine-in
 Takeout



Coffee TIME Georgetown, TX 78628

Search | 🔍

309 Coffee
 309 S Main St.
 Dine-in
 Takeout




309 Coffee is located just off the square in downtown Georgetown, TX. Started by a group of friends with a heart for delicious coffee and creating community, we are firm believers in caffeinated conversation. We aim to serve the best coffee in Georgetown, but we are just as passionate about knowing you, your drink order, and creating a place where all feel welcome.

Coffee TIME Georgetown, TX 78628

Search | 🔍

HOURS:

Monday	7AM-7PM
Tuesday	7AM-7PM
Wednesday	7AM-7PM
Thursday	7AM-7PM
Friday	7AM-7PM

MENU

ESPRESSO

House	\$2.75
Americano	\$3

ESPRESSO + MILK

Cortado (4oz)	\$3.50
Cappuccino (6oz)	\$3.75
Latte (12oz)	\$4.25
Affogato (6oz)	\$4.50
Drip	\$2.75
Cold Brew	\$3.50
Cafe au lait	\$3.50

[return to list](#)

After a user enters a location in the search bar, a list of available coffee shops in the area populates. The user can scroll through the list and click on a shop.

When a shop is selected, information regarding the shop is presented.

This information includes location, contact, hours, menu, pricing and overview.

The user can return to the prior list at the end of the listing.

Thanks to COFFEE TIME, Allie now enjoys her particular taste in coffee at a spot where she can savor it to the extent of her preference.

She can now relish her coffee time without having to always consider where to go, will a shop have something that pleases her, or if the experience will add joy to her busy day. Now she just knows...

